

Exceptional Maintenance Management using your browser!®

Work Order Explorer™

Check Status, Modify, & Complete Work Orders - any time, anywhere...

Work Order Explorer® is a key maintenance tool with its innovative approach. Team members and “drop-in” users directly access a wide range of data for pending **and** completed work orders. Using the browser on any terminal they can review outstanding work orders, make changes as needed, call up work order history, and complete (or even close) work orders. This direct approach helps reduce or even eliminate constant involvement of administrative staff in moving work orders forward to completion. In organizations with numerous external users or “customers”, this advanced InfoNet functionality can provide greatly reduced administrative costs, **and** exceptional maintenance results

Empowering the whole team...

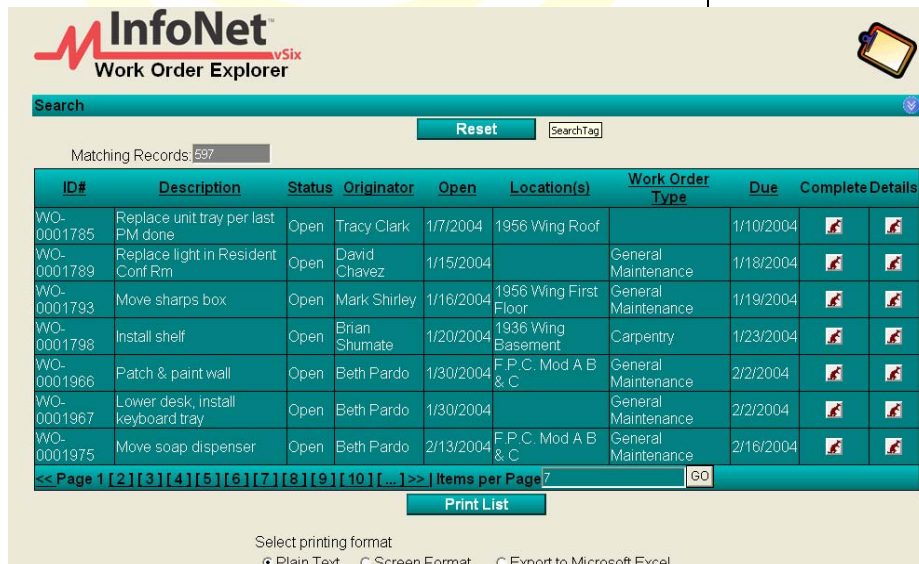
Maintenance managers today face complex challenges with Personnel being pared to the bone and Budgets under constant scrutiny. Lean Maintenance, regulatory demands and world-market competition also contribute pressure for increased efficiency and productivity. Traditional CMMS solutions add substantial clerical and administrative burdens of their own.

InfoNet Online Maintenance Tools® address these issues with a **bold new approach**. Put the power and flexibility of MPulse in the hands of front-line users. Enable managers, maintenance team members and “drop-in” users to review work in progress, and finalize maintenance work directly, using **only** the browser on their workstation. Provide modular tools, easily tailored to each organizations needs. Each user’s settings follow them across the system, providing consistent usability, security and productivity.

Work Order Search features

- Work orders searchable by :
 - 4 Global fields (Location, Department, Cost Center, System)
 - Work Order Status
 - Asset
 - WO Type
 - Date Range
 - ID# or Description
- Search both Work Order & Work Order History records
- Full data just like “admin” desktop

- W.O. Explorer screens are virtually identical to MPulse CMMS views
- Full range of search features available



InfoNet™ vSix Work Order Explorer

Search [Reset] [SearchTag]

Matching Records: 597

ID#	Description	Status	Originator	Open	Location(s)	Work Order Type	Due	Complete Details
WO-0001785	Replace unit tray per last PM done	Open	Tracy Clark	1/7/2004	1956 Wing Roof		1/10/2004	[Icon] [Icon]
WO-0001789	Replace light in Resident Conf Rm	Open	David Chavez	1/15/2004		General Maintenance	1/18/2004	[Icon] [Icon]
WO-0001793	Move sharps box	Open	Mark Shirley	1/16/2004	1956 Wing First Floor	General Maintenance	1/19/2004	[Icon] [Icon]
WO-0001798	Install shelf	Open	Brian Shumate	1/20/2004	1936 Wing Basement	Carpentry	1/23/2004	[Icon] [Icon]
WO-0001966	Patch & paint wall	Open	Beth Pardo	1/30/2004	F.P.C. Mod A B & C	General Maintenance	2/2/2004	[Icon] [Icon]
WO-0001967	Lower desk, install keyboard tray	Open	Beth Pardo	1/30/2004		General Maintenance	2/2/2004	[Icon] [Icon]
WO-0001975	Move soap dispenser	Open	Beth Pardo	2/13/2004	F.P.C. Mod A B & C	General Maintenance	2/16/2004	[Icon] [Icon]

<< Page 1 [2] [3] [4] [5] [6] [7] [8] [9] [10] [...] >> | Items per Page 7 | GO

Print List

Select printing format
 Plain Text
 Screen Format
 Export to Microsoft Excel

Work Order Management

- Review outstanding work orders at will
- Add/change inventory, personnel, etc. to existing work orders

- Complete & close outstanding Work Orders using only a web browser

Reporting Features

- WO forms & reports can be printed from the Web – external users can access the same customized reports as internal users
- Work Order lists can be printed or exported to various formats, i.e. Microsoft Excel® spreadsheet

Work Order Explorer

Tools that really fit the user...

Work Order Explorer provides each user with exactly the tools they need. Interface pages and forms are intuitively designed to help users provide complete, accurate information every time. Many pages can be customized to each users needs. Drop-down menus and pop-up help balloons contribute additional flexibility. Users have instant access to relevant data with live History Lookup, empowering them to make decisions based on complete, up-to-the-minute information. Page & function designs are consistent with MPulse Desktop & Mobile Maintenance Tools. It all adds up to training & learning curves that are measured in hours rather than weeks.

... And the organization!

Work Order Explorer provides equally powerful and flexible tools for the system manager. User names, passwords and capabilities are centrally administered (either with Microsoft Active Directory® or MPulse itself). Forms and pages can be tailored field by field, for each user. Selected authorities and access automatically follow the user across the system. Each field may be compulsory or optional, helping ensure consistent, productive data. Thus, management control is maximized while providing an exceptionally user-friendly tool to users.



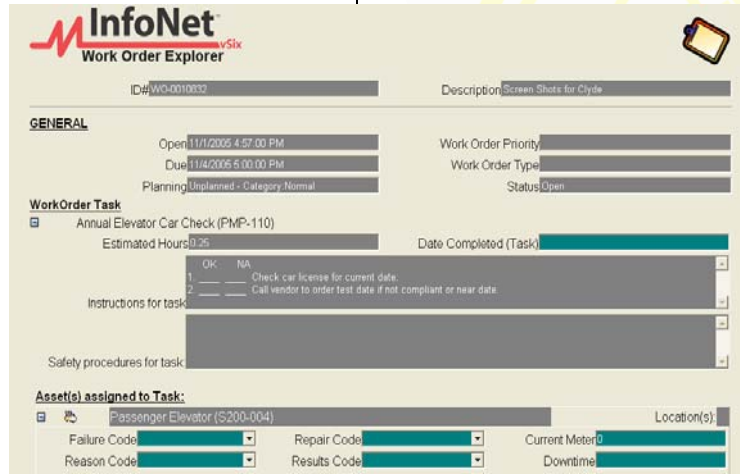
Decentralized maintenance – clear & immediate benefits

Beyond the specific features listed elsewhere, what **Work Order Explorer** (and the other members of the InfoNet vSix family) really provide is an innovative new workflow model for maintenance management. One in which information and tools to make decisions is directly accessible to those who need it most, front-line

users. Maintenance tasks are completed more quickly and accurately.

Administrative load (and overhead) is greatly reduced. Information gathered is more accurate and comprehensive. Data is immediately available across the organization,

This valuable information is in many cases the “missing link” in gaining **an accurate view** of one’s maintenance program, and therefore **the means to plan smartly** for the future! All information generated by **Work Order Explorer** automatically flows through to the MPulse database, becoming a permanent part of your maintenance management system.



System requirements

Microsoft Internet Explorer v4.0 or newer

Availability

Optional with MPulse vSix Gold EAMS/CMMS, MPulse vSix WorkFlow products

800-944-1796

www.mpulsesoftware.com



Design & contents ©2005 SpecTech, Inc. MPulse Maintenance Software, MPulse WorkFlow R, M, W MPulse Gold, vSix, InfoNet Online Maintenance Tools, Work Order Explorer are trademarks of SpecTech, Inc. Other brand & product names are trademarks or registered marks of their respective owners. Prices, hardware requirements, features, and functions subject to change without notice. Rev1/0/05